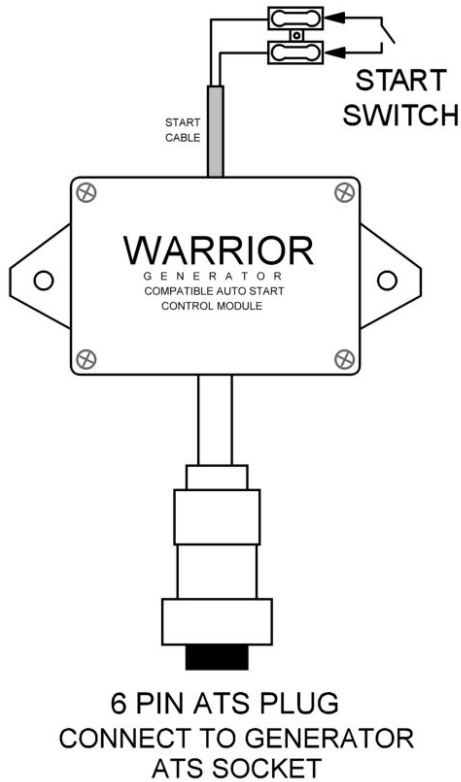


Warrior generator compatible auto start control module

DESCRIPTION

The Model AECM107FBSL is an Automatic Engine Control Module (controller) designed to automatically or manually start and stop the Warrior engine generator. The controller has 3 automatic starting attempts. Should the controller run out of starting attempts and the engine couldn't start, the controller will indicate this failure by intermittent sound. Any other unexpected engine shutdown is indicated by a continuous sound. To reset the controller back to working mode: turn the wired start switch to Off position or, if the controller was initially started from the key fob: press button "B". Automatic wired operation of the module is via ordinary volt-free Off-On maintained switch connected to the 2 pole spring wire quick connector. This wired connection can be also used to start and stop the engine from the ATS panel volt-free control switch. Remote wireless control of the module is via key fob buttons: "A" start and "B" stop. The key fob is an optional device and can be ordered from the "Extra Items/Features" section. The number of the key fobs may be selected during checkout. The key fob comes without battery fitted, please fit your own battery (type "23A").

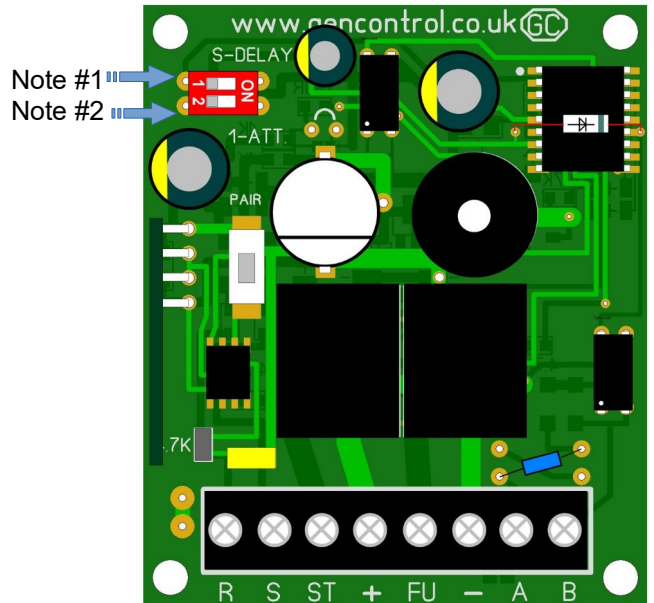
Warrior Controller Wiring Diagram



Warrior Controller PCB configuration

Note #1: the controller can be re-configured to start the engine after 10sec delay. This function may be required when the controller is operated from the ATS panel automatically and the ATS panel doesn't have a delay timer on-board. 10 sec start delay is used in combination with an ATS panel to prevent multiple short start-stop commands coming from the ATS panel while the mains unstable during blackout. To set up 10sec start delay: open the controller cover and locate the red dip switch (S-DELAY). Use a small flat screwdriver to move the dip switch 1 to ON position, then replace the cover back and tighten screws. In this mode the controller will produce an intermittent sound accompaniment prior to each starting attempt during 10sec delay.

Note #2 (optional): the controller can be re-configured to produce 1 starting attempt instead of possible 3 (max.). Please activate this mode only if your generator has no signal "engine running" available. This signal can be checked and measured with an AC voltmeter connected across the ATS socket pin 5 and 6 showing approx. 28Vac when engine running. To activate 1 starting attempt mode: slide the red dip switch #2 to ON position. Replace the cover back and tighten screws. This option may not be available unless ordered separately.



SPECIFICATION

DC Supply: 12 VDC (generator battery)
 Max. Standby Current: 0.25 mA @ 12 V (without wireless control)
 Number of attempts: 4
 Pause between each automatic attempt: 10sec
 Dimensions: 85x58x33mm
 Length of ATS cable: 2m
 Length of auto start cable: 1m
 Operating Temperature Range: -30 to +70°C.
 Type of enclosure: splash-proof.